



The Ultimate  
**Wide Format  
Hardware**  
for Impactful Displays

**TP** | think  
patented.

*A Marketing Execution Company*



**BIG &**

**BOLD**



TRADESHOW | EVENT MARKETING | BANNERS | DISPLAYS | OUTDOOR SIGNAGE

# THINK PATENTED

Welcome to “Big and Bold”, the ultimate guide for display graphics hardware. We offer a wide range of options to help you promote your business, highlight your brand, or make a statement at your next tradeshow. Our selection includes banner stands, sidewalk display boards, street pole banners, flag-style banners, and tradeshow displays. With our hardware, you can make a big and bold impact that's highly customizable and durable, and it perfectly represents your brand.

Whether you want to advertise an event, promote your business at a tradeshow, or draw attention to your storefront, you can count on Think Patented to provide the ideal hardware to showcase your brand in an impactful way.

# Modular Display

## Freestanding Information Display

Standing over 6ft tall, this freestanding modular display offers a 2ft x 3ft graphic and an angled plate with lip to house literature.

The front-loading snap frame design with a clear protective cover provides the ability to both protect and easily change graphics as needed.

Steel literature holder offers a large display area of 18"W x 12"H x 1.5"D to accept multiple sizes of printed media.

Built to last with a heavy-duty aluminum pole and a stable steel base with concealed rubber feet that grip and protect floor surfaces.

### 814187 - Modular Freestanding Display

Color: Silver

Visible Graphic Size: 24"W x 36"H



Quick & simple setup



Suitable for interchangeable graphics



Click to download resources such as design templates and additional images

# Economy

## Retractable Banner Stand

This low-cost solution provides high impact graphics that are great for short-term or widespread display needs.

Retractable banner stands offer quick and easy assembly / disassembly. The included canvas carry bag protects hardware while in transit.

### 183799 - 22" Economy Retractor

Color: Silver with silver end plates  
Visible Graphic Size: 22"W x 60"H

### 184108 - 24" Economy Retractor

Color: Silver with silver end plates  
Visible Graphic Size: 24"W x 78.75"H

### 183721 - 31.5" Economy Retractor

Color: Silver with silver end plates  
Visible Graphic Size: 31.5"W x 78.75"H

### 183724 - 33.5" Economy Retractor

Color: Silver with silver end plates  
Visible Graphic Size: 33.5"W x 78.75"H

### 184078 - 36" Economy Retractor

Color: Silver with silver end plates  
Visible Graphic Size: 36"W x 78.75"H



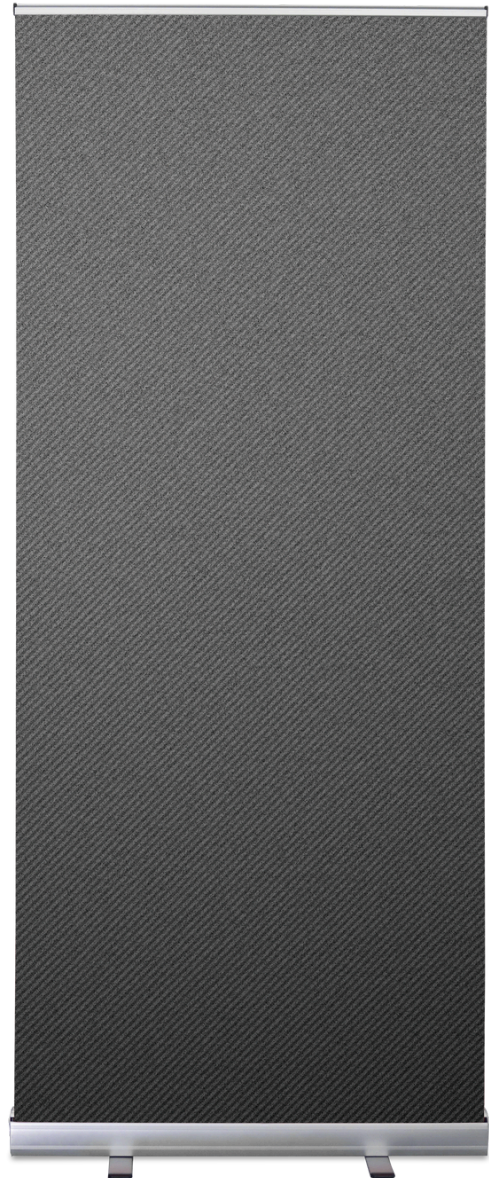
Quick & simple setup; no additional hardware or tools required



Includes carry bag



Click to download resources such as design templates and additional images



# Performance

## Retractable Banner Stand

This mid-range retractable banner stand is a step up from our Economy in both aesthetics and quality. It features strong internal parts, a thicker diameter pole, a matte silver finish, and a single twist-out foot for stability. A padded canvas carry bag is included.

The Performance Retractable Banner Stand is a great fit for any customer looking to step up their hardware game without splurging on the premium options.

### 183259 - 33.5" Performance Retractor

Color: Matte Silver

Visible Graphic Size: 33.5"W x 78.75"H



Quick & simple setup; no additional hardware or tools required



Includes carry bag



Click to download resources such as design templates and additional images



# Premium

## Retractable Banner Stand

This high-end and heavy-duty banner stand offers a long-lasting display solution with a wide variety of graphic sizes and travel bags.

Removable chrome-effect end caps hide any unattractive hardware and provide a clean and polished aesthetic. The clamp-lock telescopic pole allows for a range of graphic heights.

This premium banner stand can be returned for new graphics as often as needed (\$).



Quick & simple setup; no additional hardware or tools required



Suitable for interchangeable graphics; return for service



Includes carry bag



Click to download resources such as design templates and additional images

# Premium

## Retractable Banner Stand

814341 - Premium Retractor - 24"W  
817261 - w. Premium Gray Bag  
Color: Silver w. chrome effect end caps  
Visible Graphic Size: 24"W x 74-86"H

814293 - Premium Retractor - 31.5"W  
817543 - w. Premium Gray Bag  
817588 - w. Hard Shell Travel Case  
Color: Silver w. chrome effect end caps  
Visible Graphic Size: 31.5"W x 62-86"H

814344 - Premium Retractor - 33.5"W  
817267 - w. Premium Gray Bag  
816578 - w. Hard Shell Travel Case  
Color: Silver w. chrome effect end caps  
Visible Graphic Size: 33.5"W x 62-86"H

814347 - Premium Retractor - 36"W  
817273 - w. Premium Gray Bag  
Color: Silver w. chrome effect end caps  
Visible Graphic Size: 36"W x 62-86"H

814350 - Premium Retractor - 48"W  
817279 - w. Premium Gray Bag  
Color: Silver w. chrome effect end caps  
Visible Graphic Size: 48"W x 62-86"H

814353 - Premium Retractor - 60"W  
817285 - w. Premium Gray Bag  
Color: Silver w. chrome effect end caps  
Visible Graphic Size: 60"W x 62-86"H



### PADDED

Soft fabric with light padding. Features a zipper along the top of the bag. Includes handles and straps for light travel.



### PREMIUM

Features a rigid structure, padding and fabric. Base straps securely into case, poles are kept in a pocket in the lid and all handles are reinforced.



### TRAVEL

Features a hard plastic outer shell and internal molded foam. Designed for checking luggage on a plane or excessive travel and rough handling.

# Tabletop Mini

## Retractable Banner Stand

This small and lightweight tabletop banner stand is great for areas with limited space that require additional information or increased brand awareness.

Your custom designed banner is held and protected in the base upon transport, and is easily set up by attaching the top bar to the included support pole.

### 183988 - Tabletop Mini Retractor

Color: Silver

Visible Graphic Size: 11"W x 17"H



Quick & simple setup; no additional hardware or tools required



Click to download resources such as design templates and additional images





# Tabletop Variable

## Retractable Banner Stand

This extremely versatile and compact banner stand has a small footprint with no protruding feet and offers four different graphic heights to serve a wide variety of applications.

With a graphic width of 15.75", you can choose to display a tabletop graphic with the height of 15.75" or 31.5" – OR – a floor standing height of 47.25" or 63".

### 449464 - Variable Retractor - Tabletop Height

Color: Silver with navy end plates

Visible Graphic Size: 15.75"W x 15.75 / 31.5"H

### 449488 - Variable Retractor - Floor Height

Color: Silver with navy end plates

Visible Graphic Size: 15.75"W x 47.25 / 63"H



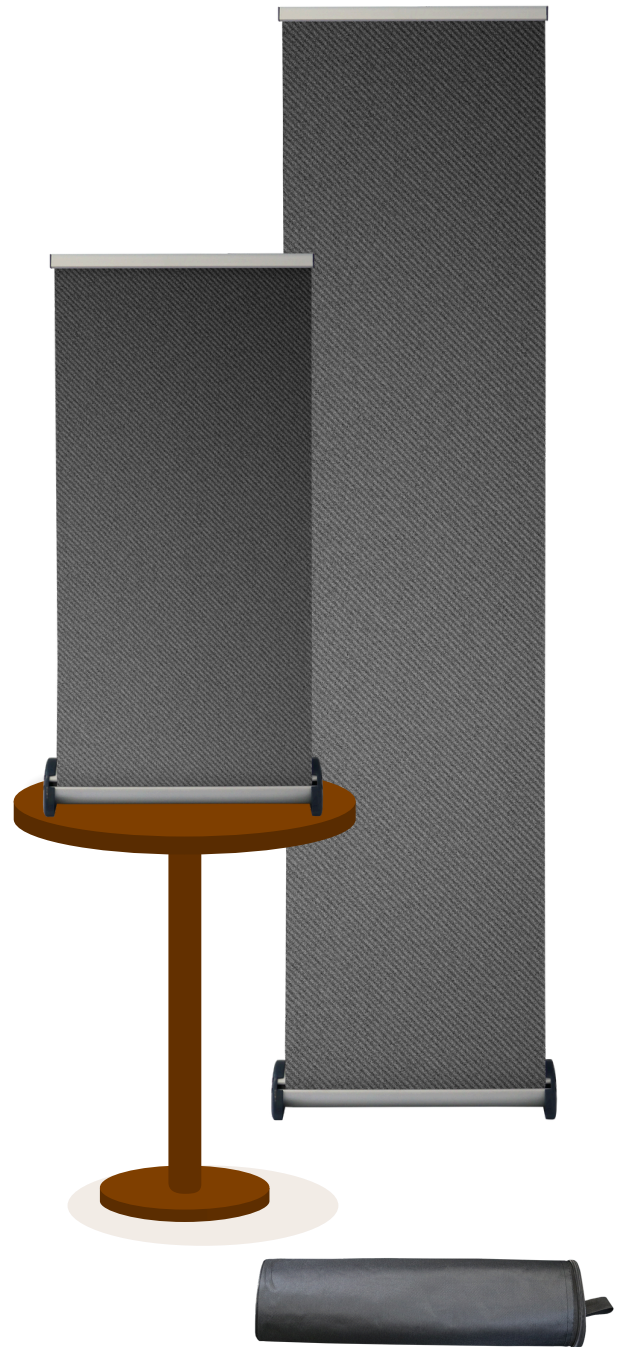
Quick & simple setup; no additional hardware or tools required



Includes carry bag



Click to download resources such as design templates and additional images



# Triple L-Banner

## Tension Banner Stand

The triple-sided L-Banner displays three banners in a triangular prism to capture attention with 360° views!

Both lightweight and sturdy, each graphic is supported by two clamp bars that attach to a heavy foot and pole.

Return for new graphics as often as needed. (\$)

### 183688 - 36" Triple-Sided L-Banner Stand

Color: Silver

Visible Graphic Size: 35.625"W x 78.75"H



Quick & simple setup; no additional hardware or tools required



Includes rigid carry bag



Suitable for interchangeable graphics; return for service



Click to download resources such as design templates and additional images

# L-Banner

## Tension Banner Stand

L-Banner stands offer a low-profile alternative to retractable banner stands and can be returned for new graphics as often as needed. Both lightweight and sturdy, the graphic is supported by two clamp bars that attach to a heavy foot and pole.

Since L-Banner stands have no retractable mechanism, the hardware is less likely to be damaged due to user error or mishandling.

### 815825 - 24" L-Banner Stand

Color: Silver

Visible Graphic Size: 24"W x 78.75"H

### 183805 - 31.5" L-Banner Stand

Color: Silver

Visible Graphic Size: 31.5"W x 78.75"H

### 447267 - 33.5" L-Banner Stand

Color: Silver

Visible Graphic Size: 33.5"W x 78.75"H

### 447270 - 36" L-Banner Stand

Color: Silver

Visible Graphic Size: 36"W x 78.75"H



Quick & simple setup; no additional hardware or tools required



Includes rigid carry bag



Suitable for interchangeable graphics; return for service



Click to download resources such as design templates and additional images

# X-Banner

## Tension Banner Stand

This premium adjustable X-Banner stand offers a low-cost solution for a single display or wide-spread rollout.

The hardware offers telescopic arms and an adjustable center hub to accommodate a variety of graphic sizes ranging from 18-42"W and 72-86"H. Hooks on each corner allow the user to attach the grommeted banner and easily switch it out for new graphics as needed.

### 817111 - Adjustable X-Banner Stand

Color: Silver

Visible Graphic Size: 18-42"W x 72-86"H



Quick & simple setup; no additional hardware or tools required



Suitable for interchangeable graphics



Includes carry bag



Click to download resources such as design templates and additional images



# H-Banner

## Tension Banner Stand

This attractive and versatile display offers a wide variety of graphic heights due to an adjustable bottom clip on the telescopic pole. The hinged trio base is sturdy enough for high traffic areas and also folds neatly into the included carry bag.

Create and display single or double-sided graphics that can be returned for new graphics as often as needed (\$).

### 447660 - 18" H-Banner Stand

Color: Silver

Visible Graphic Size: 18"W x 36-84"H

### 447342 - 24" H-Banner Stand

Color: Silver

Visible Graphic Size: 24"W x 36-84"H

### 447763 - 31.5" H-Banner Stand

Color: Silver

Visible Graphic Size: 31.5"W x 36-84"H



Quick & simple setup; no additional hardware or tools required



Double-sided viewing hardware holds two separate graphics



Suitable for interchangeable graphics; return for service



Includes padded carry bag



Click to download resources such as design templates and additional images

# A-Board

## Sidewalk Display

Entice new and existing customers into your establishment or increase overall information sharing and brand awareness with this stylish sidewalk display.

With double-sided front loading snap frames and clear protective covers, this A-Board features low-cost easy-change replacement graphics. It can be set up in seconds, and when it is no longer needed, it can be folded flat for compact storage and easy transportation.

*\*To ensure hardware longevity, it's recommended to bring display indoors in heavy winds/precipitation.*

### 183790 - Sidewalk A-Board

Color: Silver

Visible Graphic Size: 24"W x 36"H



Quick & simple setup; no additional hardware or tools required



Double-sided viewing hardware holds two separate graphics



Suitable for interchangeable graphics



Click to download resources such as design templates and additional images

# Free-Flowing Flag

## Tension Banner Stand

Built for the great outdoors, our high-quality fiberglass poles and breathable reverse mirror printed graphics pair with spinning bearings on the base to withstand all four seasons.

Flag displays waving in the wind are great for catching the attention of motor or foot traffic, but can also be added to any indoor marketing or trade show display for a unique flare.

### 816050 - Small

Teardrop: 7.5ft / Feather: 8.5ft

### 816053 - Medium

Teardrop: 10ft / Feather: 12ft

### 816056 - Large Flag

Teardrop: 13.5ft / Feather: 15.5ft

### 816074 - Spike Base

### 816080 - Cross Base

### 183772 - Water Bag



Quick & simple setup; no additional hardware or tools required



Double-sided viewing hardware holds reverse mirror print



Includes carry bag



Suitable for interchangeable graphics



Click to download resources such as design templates and additional images

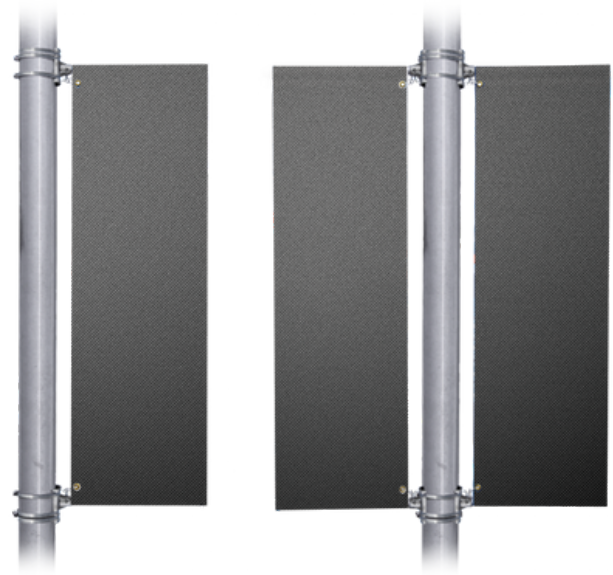
# Street Pole Kit

## Double-Pocket Banner

Made for poles that are thin or wide, cylindrical, or square-shaped, our universal mounting brackets will securely attach to any pole-like structure.

Kits include stainless steel hardware and fiberglass poles to ensure a long-lasting outdoor product.

Display visitor information in your city's downtown region, increase brand recognition on campus, or display promotions in parking lots with a variety of sizes and options to suit your needs!



[814615 - 18" Single Street Pole Kit](#)  
[814639 - 18" Double Street Pole Kit](#)  
Visible Graphic Size: 18"W x 48"H

[814618 - 24" Single Street Pole Kit](#)  
[814642 - 24" Double Street Pole Kit](#)  
Visible Graphic Size: 24"W x 48"H

[814621 - 30" Single Street Pole Kit](#)  
[814645 - 30" Double Street Pole Kit](#)  
Visible Graphic Size: 30"W x 48"H

[814624 - 36" Single Street Pole Kit](#)  
[814648 - 36" Double Street Pole Kit](#)  
Visible Graphic Size: 36"W x 48"H



Quick & simple setup; all necessary tools and hardware included



Double-sided viewing, hardware holds double-sided print



Suitable for interchangeable graphics



Click to download resources such as design templates and additional images



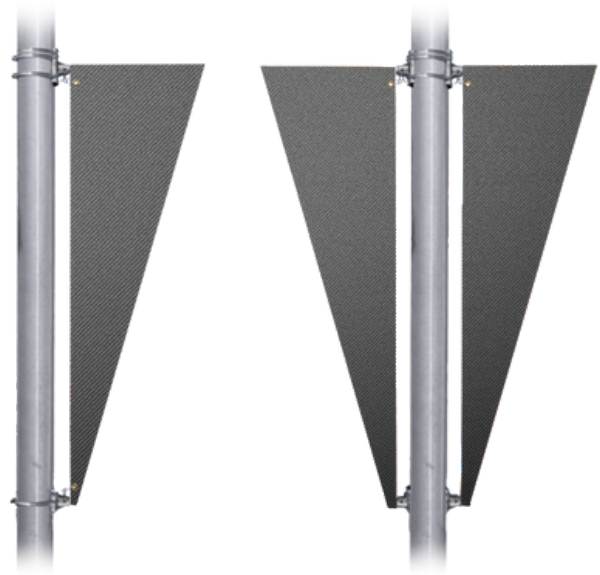
# Street Pole Kit

## Single-Pocket Banner

Made for poles that are thin or wide, cylindrical, or square-shaped, our universal mounting brackets will securely attach to any pole-like structure.

Kits include stainless steel hardware and fiberglass poles to ensure a long-lasting outdoor product.

The bottom of the graphic is attached to a pole using a D-bracket to accommodate a triangle-shaped banner or to add movement to a rectangular banner.



818113 - 18" Single Street Pole Kit  
818137 - 18" Double Street Pole Kit  
Visible Graphic Size: 18"W x 48"H

818116 - 24" Single Street Pole Kit  
818140 - 24" Double Street Pole Kit  
Visible Graphic Size: 24"W x 48"H

818119 - 30" Single Street Pole Kit  
818143 - 30" Double Street Pole Kit  
Visible Graphic Size: 30"W x 48"H

818122 - 36" Single Street Pole Kit  
818146 - 36" Double Street Pole Kit  
Visible Graphic Size: 36"W x 48"H



Quick & simple setup; all necessary tools and hardware included



Double-sided viewing, hardware holds double-sided print



Suitable for interchangeable graphics



Click to download resources such as design templates and additional images

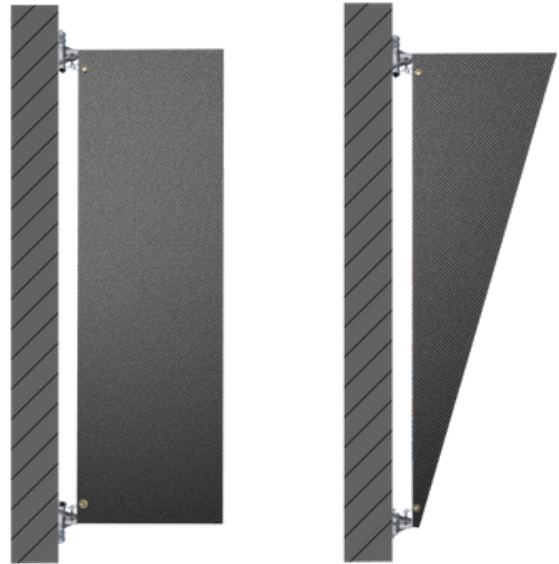
# Wall Mount Kit

## Single/Double-Pocket Banner

Whether you choose to display indoors or out, wall-mounted flags are widely used for directional signage, to increase brand awareness, and to draw customer attention to your establishment.

Wall mount kits include stainless steel hardware and fiberglass poles to create a long-lasting product.

Choose between double-pocket or single pocket w. D-bracket styles.



### 816733 - 18" Wall Mount Kit (2 poles)

Visible Graphic Size: 18"W x 48"H

### 816736 - 24" Wall Mount Kit (2 poles)

Visible Graphic Size: 24"W x 48"H

### 816739 - 30" Wall Mount Kit (2 poles)

Visible Graphic Size: 30"W x 48"H

### 816742 - 36" Wall Mount Kit (2 poles)

Visible Graphic Size: 36"W x 48"H

### 818092 - 18" Wall Mount Kit (pole/D-bracket)

Visible Graphic Size: 18"W x 48"H

### 818095 - 24" Wall Mount Kit (pole/D-bracket)

Visible Graphic Size: 24"W x 48"H

### 818098 - 30" Wall Mount Kit (pole/D-bracket)

Visible Graphic Size: 30"W x 48"H

### 818101 - 36" Wall Mount Kit (pole/D-bracket)

Visible Graphic Size: 36"W x 48"H



Quick & simple setup; all necessary tools and hardware included



Double-sided viewing, hardware holds double-sided print



Suitable for interchangeable graphics



Click to download resources such as design templates and additional images

# Span Mount Kit

## Pole-to-Pole & Wall-to-Wall

Create and display limitless designs using span mount kits. Our universal mounting brackets will securely attach to any pole shape, size, or wall structure.

These are great for municipalities to advertise local sporting events or festivals above city streets, or businesses to utilize overhead promotional space. This versatile hardware offers endless options and applications!



### 818158 - Pole Span Mount Kit

Visible Graphic Size: Various Width/Heights

### 818161 - Wall Span Mount Kit

Visible Graphic Size: Various Width/Heights



Quick & simple setup; all necessary tools and hardware included



Suitable for interchangeable graphics



Double-sided viewing, hardware holds double-sided print



Click to download resources such as design templates and additional images

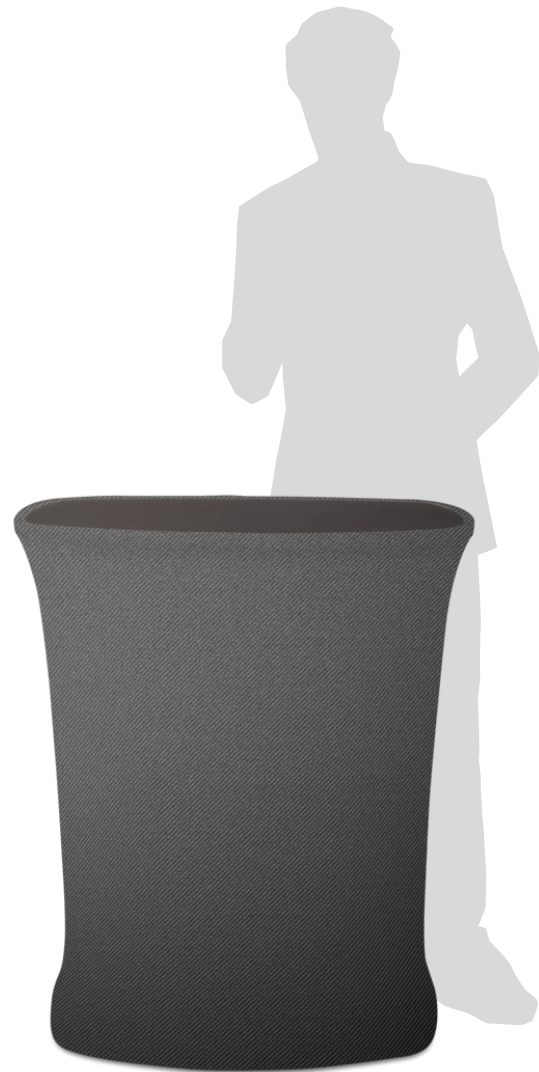
# Podium

## Textile Display

This podium tension fabric display features four vertical pole supports to allow quick and simple set-up and disassembles into a compact travel bag for easy storage and transportation.

A silicone edge is sewn into the fabric graphic and inserts into a channel on the countertop and base. A zipper in the back of the graphic allows discreet storage for personal or promotional items.

Textile prints offer high impact and high-resolution images with superior color, transport well, and are machine washable.



### 184015 - Podium Textile Display

Visible Graphic Size: 31.5"W x 40"H



Quick & simple setup; no additional hardware or tools required



Includes carry bag



Suitable for interchangeable graphics



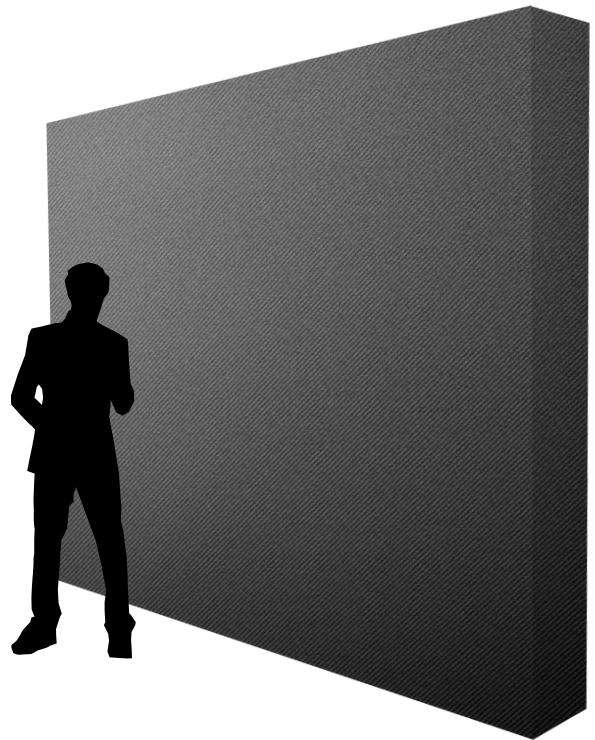
Click to download resources such as design templates and additional images

# Pop-Up

## Textile Display

Textile backdrop displays offer high impact and high-resolution images with superior color. Offering quick and simple setup, the accordion style pop-up hardware allows graphics to remain attached even when stored in a carry bag or hard case.

Elevate your tradeshow, showroom, or storefront window display. If your graphic gets dirty, textile prints are machine washable or can be easily cleaned by hand.



[183343 - 7.5ft Pop-up Textile Display](#)  
[447411 - w. Premium Travel Case](#)  
Visible Graphic Size: 90"W x 90"H

[183847 - 10ft Pop-up Textile Display](#)  
[447414 - w. Premium Travel Case](#)  
Visible Graphic Size: 120"W x 90"H



Quick & simple setup; no additional hardware or tools required



Includes carry bag, choice of wheeled canvas case or premium travel case



Suitable for interchangeable graphics



Click to download resources such as design templates and additional images

# Banner Stand

## Textile Display

This high-end alternative to traditional retractable banner stands provides high impact images with superior color.

The push-fit tubular hardware with pillowcase style graphics offers a quick and simple set up. A carry bag for easy transportation is included.

Elevate displays for retail, tradeshow, or conferences. If your graphic gets dirty, textile prints are machine washable or can be easily cleaned by hand.



Quick & simple setup; no additional hardware or tools required



Double-sided viewing, hardware holds one graphic printed double-sided



Suitable for interchangeable graphics



Includes carry bag



Click to download resources such as design templates and additional images



# Banner Stand

## Textile Display

### 818521 - 2ft x 7.5ft Textile Banner Stand

Visible Graphic Size: 24"W x 90"H

### 447672 - 2ft x 9.5ft Textile Banner Stand

Visible Graphic Size: 24"W x 114"H

### 447675 - 2ft x 11.5ft Textile Banner Stand

Visible Graphic Size: 24"W x 138"H

### 447678 - 2ft x 13.5ft Textile Banner Stand

Visible Graphic Size: 24"W x 162"H

### 818530 - 3ft x 7.5ft Textile Banner Stand

Visible Graphic Size: 36"W x 90"H

### 447687 - 3ft x 9.5ft Textile Banner Stand

Visible Graphic Size: 36"W x 114"H

### 447690 - 3ft x 11.5ft Textile Banner Stand

Visible Graphic Size: 36"W x 138"H

### 447693 - 3ft x 13.5ft Textile Banner Stand

Visible Graphic Size: 36"W x 162"H

### 818539 - 4ft x 7.5ft Textile Banner Stand

Visible Graphic Size: 48"W x 90"H

### 447702 - 4ft x 9.5ft Textile Banner Stand

Visible Graphic Size: 48"W x 114"H

### 447705 - 4ft x 11.5ft Textile Banner Stand

Visible Graphic Size: 48"W x 138"H

### 447708 - 4ft x 13.5ft Textile Banner Stand

Visible Graphic Size: 48"W x 162"H

### 818545 - 5ft x 7.5ft Textile Banner Stand

Visible Graphic Size: 60"W x 90"H

### 447717 - 5ft x 9.5ft Textile Banner Stand

Visible Graphic Size: 60"W x 114"H

### 447720 - 5ft x 11.5ft Textile Banner Stand

Visible Graphic Size: 60"W x 138"H

### 447723 - 5ft x 13.5ft Textile Banner Stand

Visible Graphic Size: 60"W x 162"H

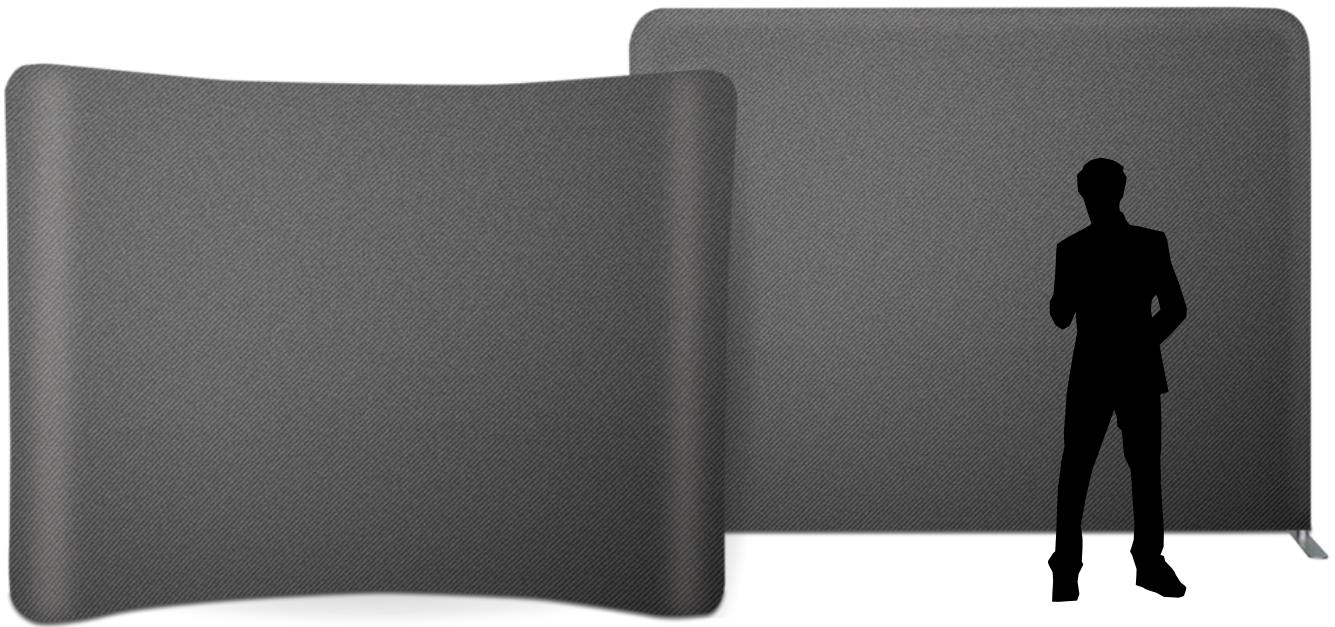


# Backdrop

## Textile Display

Textile backdrop displays offer high impact and high-resolution images with superior color. The push-fit tubular hardware with pillowcase style graphics offers a quick and simple set up. A carry bag for easy transportation is also included.

Elevate your tradeshow, showroom, or storefront window display. If your graphic gets dirty, textile prints are machine washable or can be easily cleaned by hand.



Quick & simple setup; no additional hardware or tools required



Double-sided viewing, hardware holds one graphic printed double-sided



Suitable for interchangeable graphics



Includes carry bag, choice of standard padded canvas or premium travel case



Choose between straight or freestanding curved backdrop shapes



Click to download resources such as design templates and additional images



# Backdrop

## Textile Display

184162 - 8ft x 7.5ft Textile Straight Backdrop  
447444 - w. Premium Travel Case  
Visible Graphic Size: 96"W x 90"H

447522 - 8ft x 9.5ft Textile Straight Backdrop  
447525 - w. Premium Travel Case  
Visible Graphic Size: 96"W x 114"H

447528 - 8ft x 11.5ft Textile Straight Backdrop  
447531 - w. Premium Travel Case  
Visible Graphic Size: 96"W x 138"H

447534 - 8ft x 13.5ft Textile Straight Backdrop  
447537 - w. Premium Travel Case  
Visible Graphic Size: 96"W x 162"H

184003 - 10ft x 7.5ft Textile Straight Backdrop  
447447 - w. Premium Travel Case  
Visible Graphic Size: 120"W x 90"H

447549 - 10ft x 9.5ft Textile Straight Backdrop  
447552 - w. Premium Travel Case  
Visible Graphic Size: 120"W x 114"H


447555 - 10ft x 11.5ft Textile Straight Backdrop  
447558 - w. Premium Travel Case  
Visible Graphic Size: 120"W x 138"H

447561 - 10ft x 13.5ft Textile Straight Backdrop  
447564 - w. Premium Travel Case  
Visible Graphic Size: 120"W x 162"H

184135 - 8ft x 7.5ft Textile Curved Backdrop  
447429 - w. Premium Travel Case  
Visible Graphic Size: 96"W x 90"H

184159 - 20ft x 7.5ft Textile Curved Backdrop  
447435 - w. Premium Travel Case  
Visible Graphic Size: 240"W x 90"H

184000 - 10ft x 7.5ft Textile Curved Backdrop  
447432 - w. Premium Travel Case  
Visible Graphic Size: 120"W x 90"H

Choose from standard padded bag or premium travel case. 



# SmartWedge

## Rigid Display Bases

This lightweight and sturdy sign support base is available in a black or silver finish. It is able to support a variety of rigid substrates up to 72" tall and is available in three widths to support your signage needs.

The surface of the base allows for additional branding to be applied upon request (\$).

The SMARTWEDGE is proudly manufactured in Canada!



Quick & simple setup; no additional hardware or tools required



Double-sided viewing, hardware holds one graphic printed double-sided



Suitable for interchangeable graphics



Click to download resources such as design templates and additional images



# SmartWedge

## Rigid Display Bases

### 448312 - 4"W SmartWedge Sign Base

Color: Silver

Visible Graphic Size: up to 36"W x 72"H

### 448315 - 4"W SmartWedge Sign Base

Color: Black

Visible Graphic Size: up to 36"W x 72"H

### 448327 - 24"W SmartWedge Sign Base

Color: Silver

Visible Graphic Size: 24"W x 72"H

### 448330 - 24"W SmartWedge Sign Base

Color: Black

Visible Graphic Size: 24"W x 72"H

### 448351 - 36"W SmartWedge Sign Base

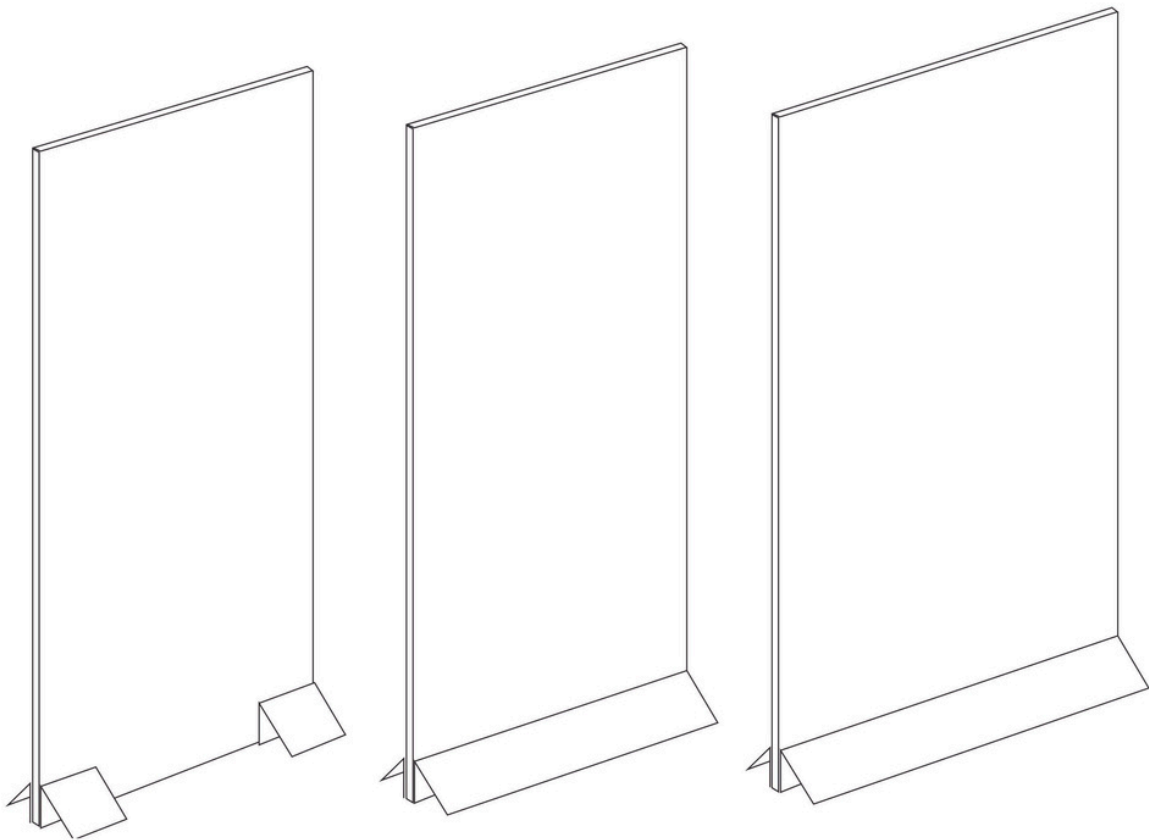
Color: Silver

Visible Graphic Size: 36"W x 72"H

### 448354 - 36"W SmartWedge Sign Base

Color: Black

Visible Graphic Size: 36"W x 72"H



# Snap Frame

## Information Display

These aluminum front-loading snap frames are available in a black or silver finish in a variety of sizes. They offer a high-end appearance that is great for displaying images or information that can be easily and frequently switched out. Clear protective graphic covers provided to be placed over the print.

Pre-drilled holes beneath the profile accommodate #8 screws for wall hanging purposes. Smaller sizes can be adhered using double-sided tape.

Elevate your establishment and information sharing with patrons with these easy to use and aesthetically pleasing snap frames!



Quick & simple setup



Suitable for interchangeable graphics



Requires additional hardware and tools for wall mounting



Click to download resources such as design templates and additional images

# Snap Frame

## Information Display

### 814400 - 8.5" x 11" Snap Frame

Color: Silver

Visible Graphic Size: 8.5" x 11"

### 814404 - 11" x 17" Snap Frame

Color: Silver

Visible Graphic Size: 11" x 17"

### 814410 - 17" x 22" Snap Frame

Color: Silver

Visible Graphic Size: 17" x 22"

### 814412 - 18" x 24" Snap Frame

Color: Silver

Visible Graphic Size: 18" x 24"

### 814420 - 22" x 28" Snap Frame

Color: Silver

Visible Graphic Size: 22" x 28"

### 814424 - 24" x 36" Snap Frame

Color: Silver

Visible Graphic Size: 24" x 36"

### 814432 - 36" x 48" Snap Frame

Color: Silver

Visible Graphic Size: 36" x 48"

### 814401 - 8.5" x 11" Snap Frame

Color: Black

Visible Graphic Size: 8.5" x 11"

### 814405 - 11" x 17" Snap Frame

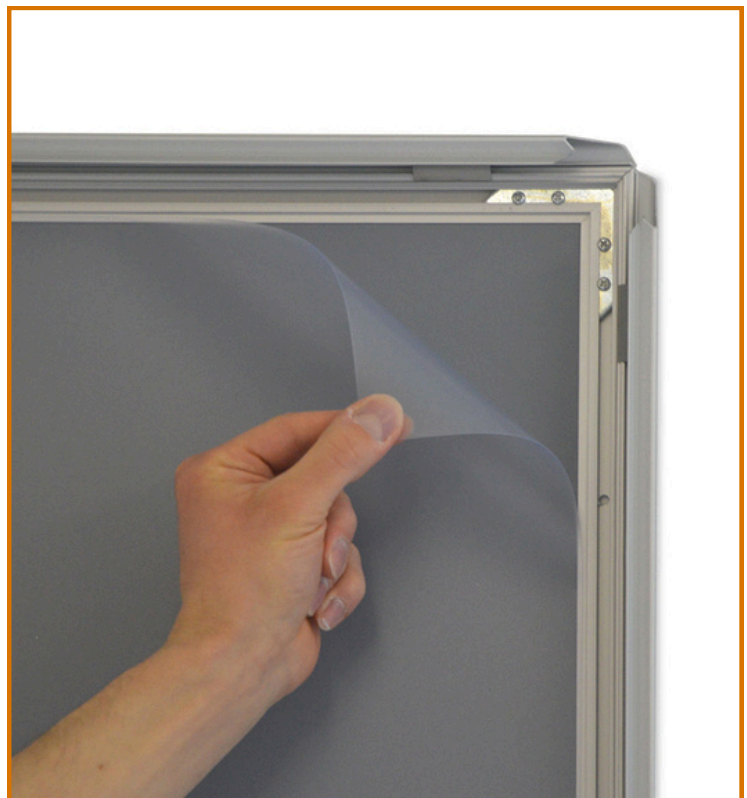
Color: Black

Visible Graphic Size: 11" x 17"

### 814425 - 24" x 36" Snap Frame

Color: Black

Visible Graphic Size: 24" x 36"



# Poster Hanging Kit

## Information Display

This poster hanging kit has top and bottom weighted clamp bars in a variety of widths to display your images and information on the wall, in a window, or suspended from the ceiling.

Customize the height of your banner to any size needed and return the hardware for a new banner as often as desired. Banners can be printed single or double sided to accommodate 360° viewing.

Heavy-duty suction cups with hooks are available to hang your poster in a window.



Quick & simple setup



Double-sided viewing, hardware holds one graphic printed double-sided



Suitable for interchangeable graphics; return for service



Requires additional hardware and tools for wall mounting



Click to download resources such as design templates and additional images

# Poster Hanging Kit

## Information Display

**816613 - 11"W Poster Clamp, Top & Bottom**  
Color: Silver  
Visible Graphic Size: 11"W x Various Heights

**816616 - 22"W Poster Clamp, Top & Bottom**  
Color: Silver  
Visible Graphic Size: 22"W x Various Heights

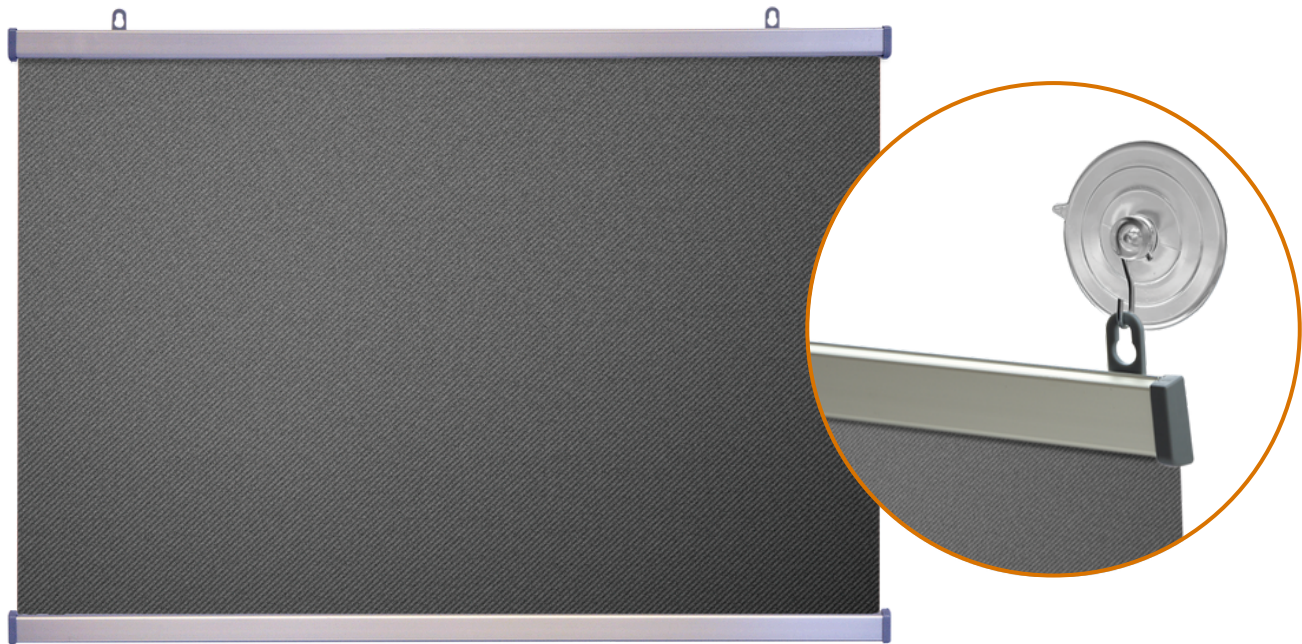
**816619 - 24"W Poster Clamp, Top & Bottom**  
Color: Silver  
Visible Graphic Size: 24"W x Various Heights

**816622 - 36"W Poster Clamp, Top & Bottom**  
Color: Silver  
Visible Graphic Size: 36"W x Various Heights

**816625 - 48"W Poster Clamp, Top & Bottom**  
Color: Silver  
Visible Graphic Size: 48"W x Various Heights

**816628 - 60"W Poster Clamp, Top & Bottom**  
Color: Silver  
Visible Graphic Size: 60"W x Various Heights

**816440 - Suction Cup w. Hook, 2pk**  
Details: Heavy-duty, 2.5"D



# Acrylic Pocket

## Tabletop Display

This tabletop display accommodates a graphic sized 8.5" x 11" and can display single or double-sided prints.

Graphics can be easily changed at customer level by opening the acrylic pocket and replacing the poster with a new one.

The acrylic pocket provides protection making it great for high-traffic countertops that are subject to regular contact and/or require frequent disinfecting.

### 814658 - Tabletop Acrylic Pocket

Color: Silver

Visible Graphic Size: 8.5"W x 11"H



Quick & simple setup; no additional hardware or tools required



Double-sided viewing, hardware holds one graphic printed double-sided



Suitable for interchangeable graphics



Click to download resources such as design templates and additional images



# Standoff Display

for Rigid Graphics

Create a three-dimensional effect to any rigid signage by mounting it using standoffs. Offered in a variety of sizes, these small and discreet fixings securely float your designs away from the wall for a high impact aesthetic!

814952 - Standoff, 0.5"D x 0.75"L

Color: Satin Chrome Finish

814951 - Standoff, 1"D x 1"L

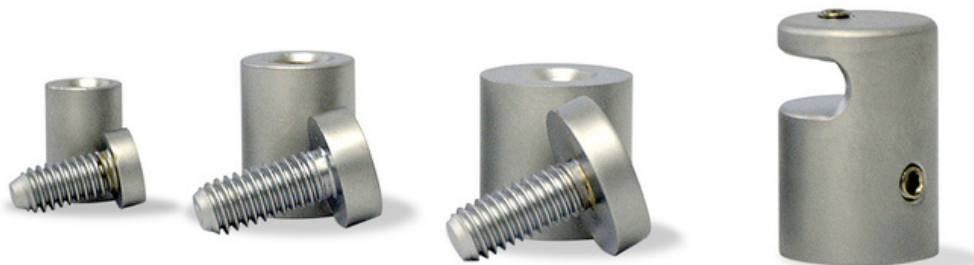
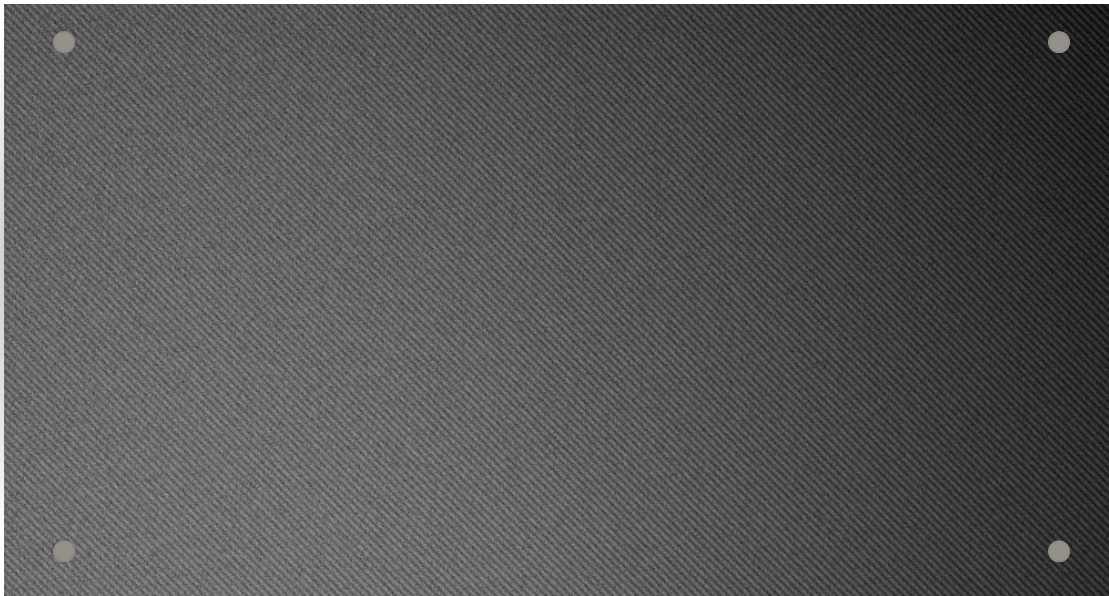
Color: Satin Chrome Finish

814950 - Standoff, 0.75"D x 1"L

Color: Satin Chrome Finish

814989 - Panel Side-Support, 1"D x 1"L

Color: Satin Chrome Finish



# 3D Canvas

## Artwork Display

Add instant pizzaz to any business entrance, board room, or office with a 3D canvas print.

Upgrade your personal or professional space and display your designs with this lightweight and premium stretched canvas display, offered in four standard sizes!

### 818929 - Small 3D Canvas

Visible Graphic Size: 8" x 12"

### 818932 - Small Square 3D Canvas

Visible Graphic Size: 12" x 12"

### 818938 - Medium 3D Canvas

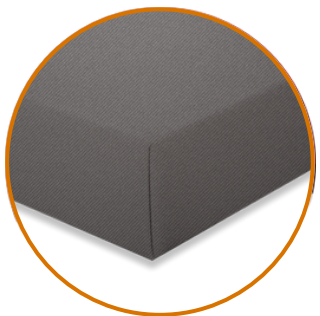
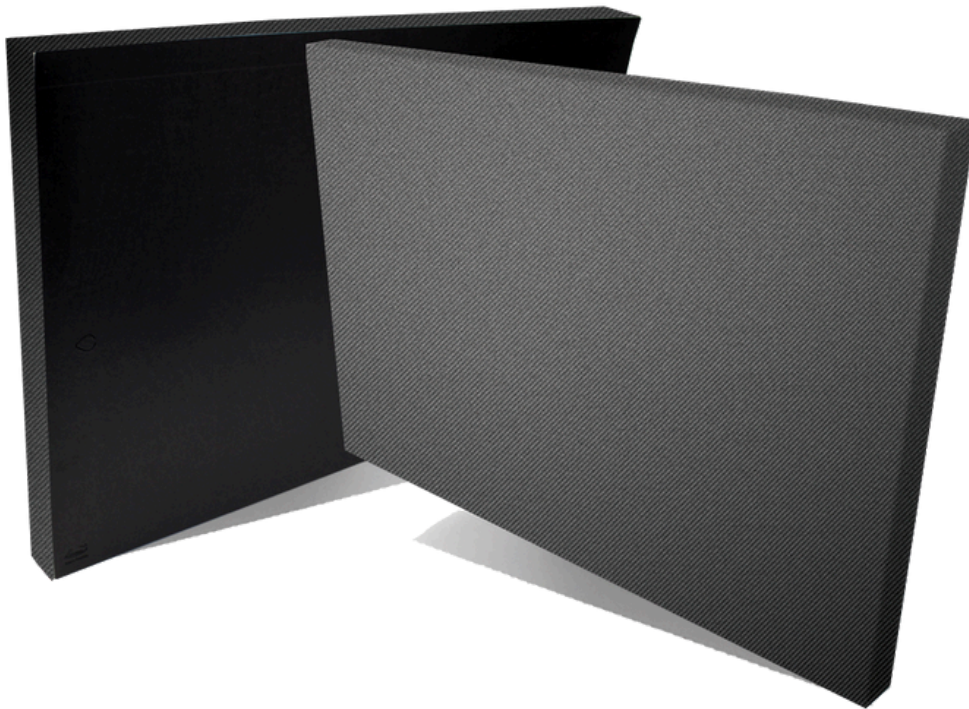
Visible Graphic Size: 16" x 20"

### 818941 - Large 3D Canvas

Visible Graphic Size: 20" x 30"

### 818953 - Easel Back Support (Optional)

Compatible with 8" x 12" and 12" x 12" sizes



1.5" deep  
with perfect gallery  
corners everytime!



Click to download resources such as design templates and additional images

# Literature Holder

## Collapsible

This easy set-up literature holder is lightweight and locks in both upright and collapsed positions. It features five single-sided steel pockets that are 8.5"W x 11"H and 1.5" deep.

Literature is protected during travel due to its 'stow and go' style – simply unlock and collapse the pockets into a compact padded travel bag.

### 447973 - Collapsible Literature Holder

Color: Silver/Black



Quick & simple setup; no additional hardware or tools required



Includes carry bag





2490 CrossPointe Drive  
Miamisburg, OH 45342

**ThinkPatented.com**  
937.353.2299